



Shown: G-1 1,405 approx. A/C sq. ft.

BELLINI SERIES

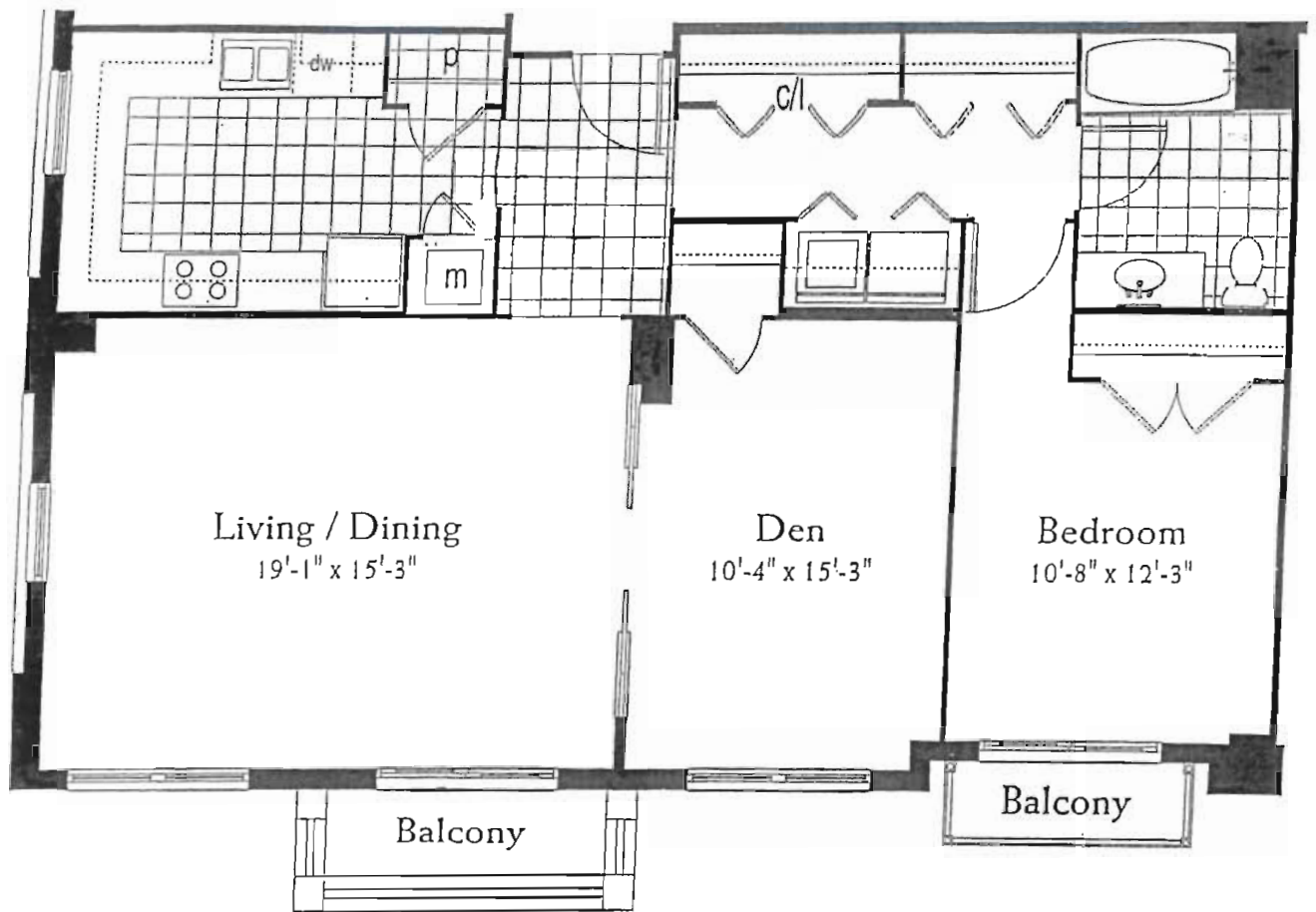
2 BEDROOM/2 BATH/PLUS DEN
1,355 SQ. FT. TO 1,470 SQ. FT.



Provided by:

CS
Candy Swick & Company
 Licensed Real Estate Broker
 941-954-9000

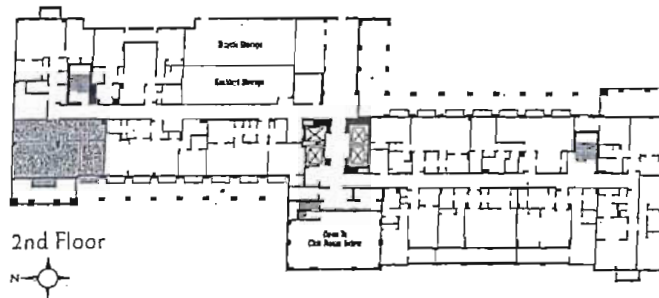
Oral representations cannot be relied upon as correctly stating representations of the developer. For correct representations, make reference to this advertisement and to the documents required by section 718.503, Florida Statutes, to be furnished by a developer to a buyer or lessee.



Shown: C-10 960 approx. A/C sq. ft.

BOTTICELLI SERIES

1 BEDROOM/1 BATH/DEN
 950 SQ. FT. TO 1,115 SQ. FT.



Provided by:

CS
Candy Swick & Company
Licensed Real Estate Broker
941-954-9000

Oral representations cannot be relied upon as correctly stating representations of the developer. For correct representations, make reference to this advertisement and to the documents required by section 718.503, Florida Statutes, to be furnished by a developer to a buyer or lessee.



Shown: H-1 1,460 approx. A/C sq. ft.

DA VINCI SERIES

3 BEDROOM/2 BATH
1,460 SQ. FT.



5th-16th Floors

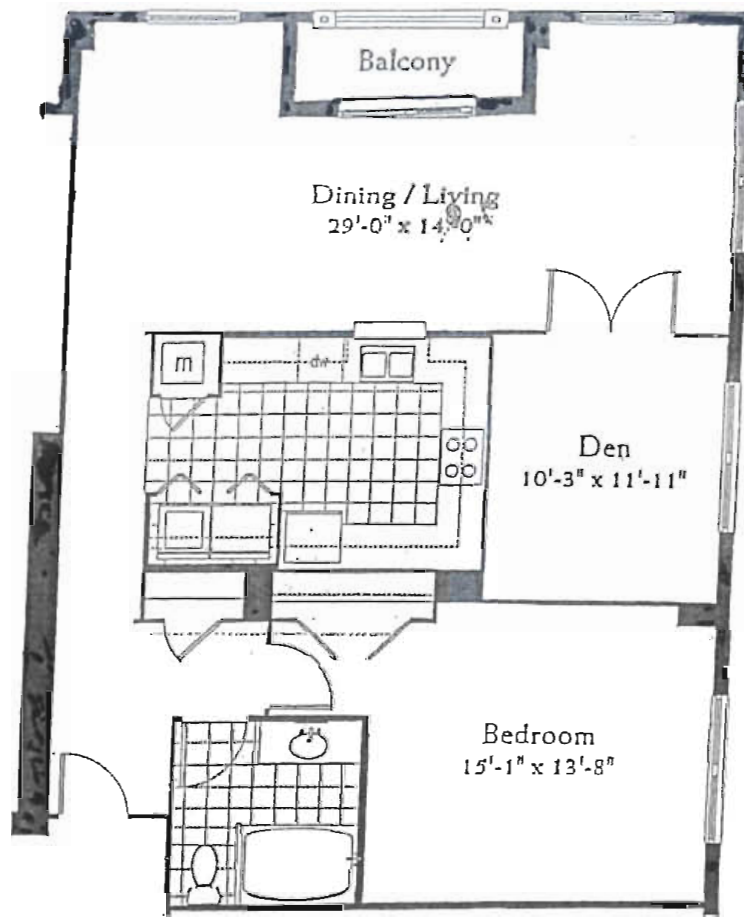


Provided by:

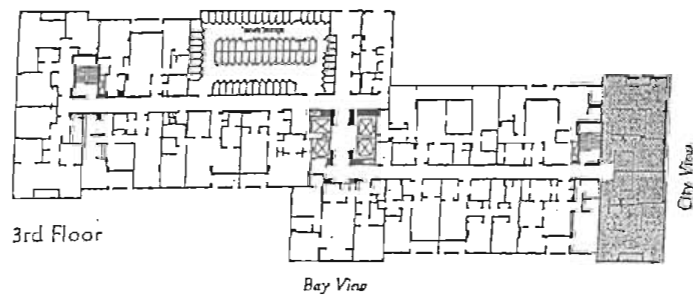
C&S
Candy Swick & Company
Licensed Real Estate Broker

941-954-9000

Oral representations cannot be relied upon as correctly stating representations of the developer. For correct representations, make reference to this advertisement and to the documents required by section 718.503, Florida Statutes, to be furnished by a developer to a buyer or lessee.



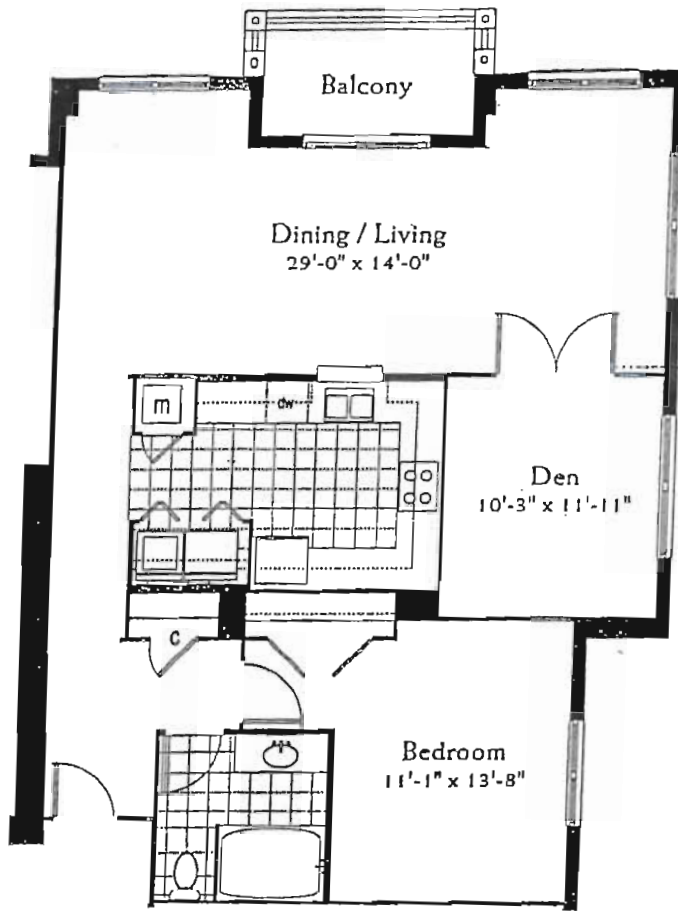
UNIT C-3



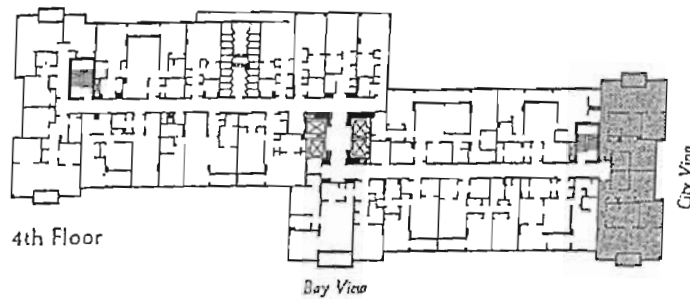
Provided by:


Candy Swick & Company
 Licensed Real Estate Broker
 941-954-9000

Oral representations cannot be relied upon as correctly stating representations of the developer. For correct representations, make reference to this advertisement and to the documents entitled by section 718.503, Florida Statutes, to be furnished by a developer to a buyer or lessee.



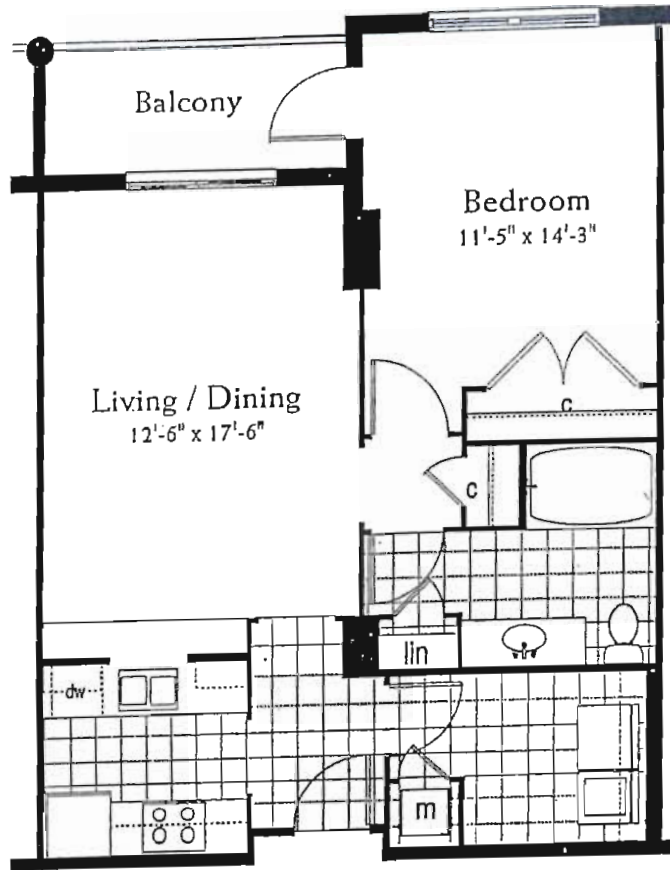
UNIT C-4



Provided by:


Candy Swick & Company
 Licensed Real Estate Broker
941-954-9000

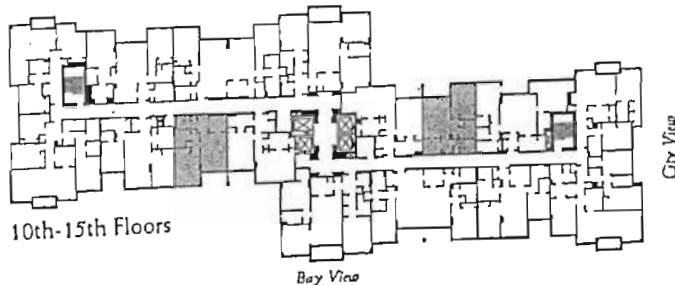
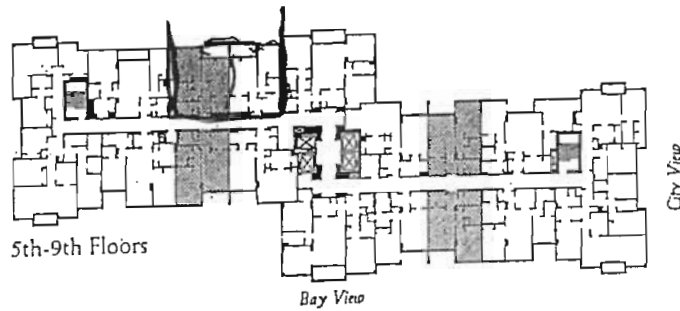
Oral representations cannot be relied upon as correctly stating representations of the developer. For correct representations, make reference to this advertisement and to the documents required by section 718.303, Florida Statutes, to be furnished by a developer to a buyer or lessee.



Shown: A-1C 705 approx. A/C sq. ft.

RAPHAEL SERIES

1 BEDROOM/1 BATH
695 SQ. FT. TO 1,020 SQ. FT.



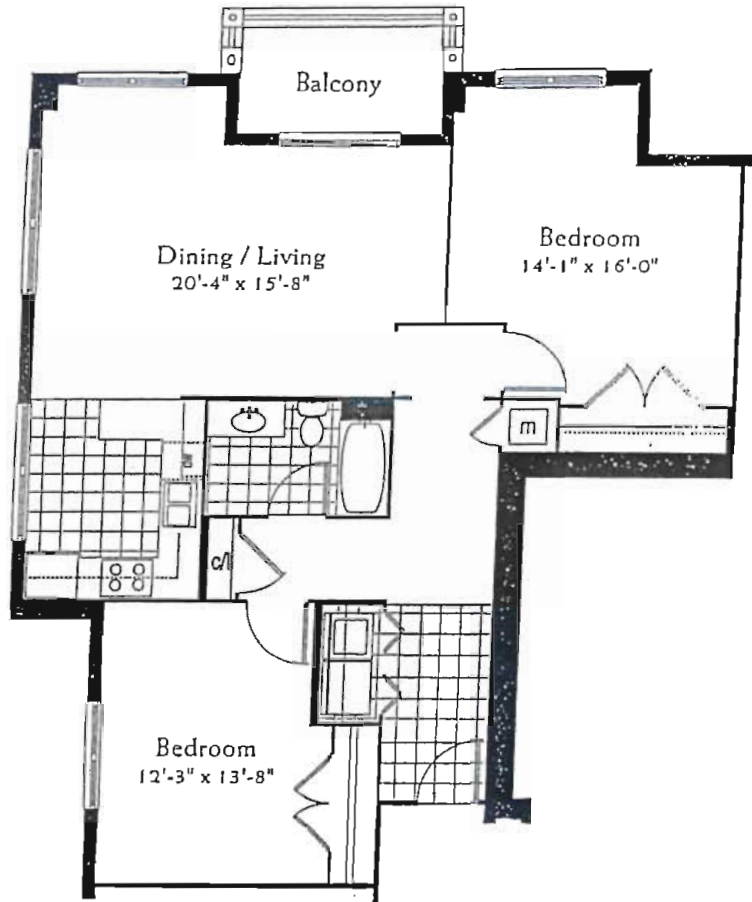
Provided by:



Candy Swick & Company
Licensed Real Estate Broker

941-954-9000

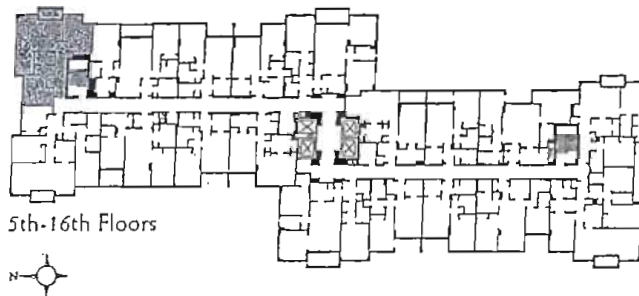
Oral representations cannot be relied upon as correctly stating representations of the developer. For correct representations, make reference to this advertisement and to the documents required by section 718.303, Florida Statutes, to be furnished by a developer to a buyer or lessee.



Shown: C-5 1,000 approx. A/C sq. ft.

REMBRANDT SERIES

2 BEDROOM/1 BATH
 990 SQ. FT. TO 1,030 SQ. FT.



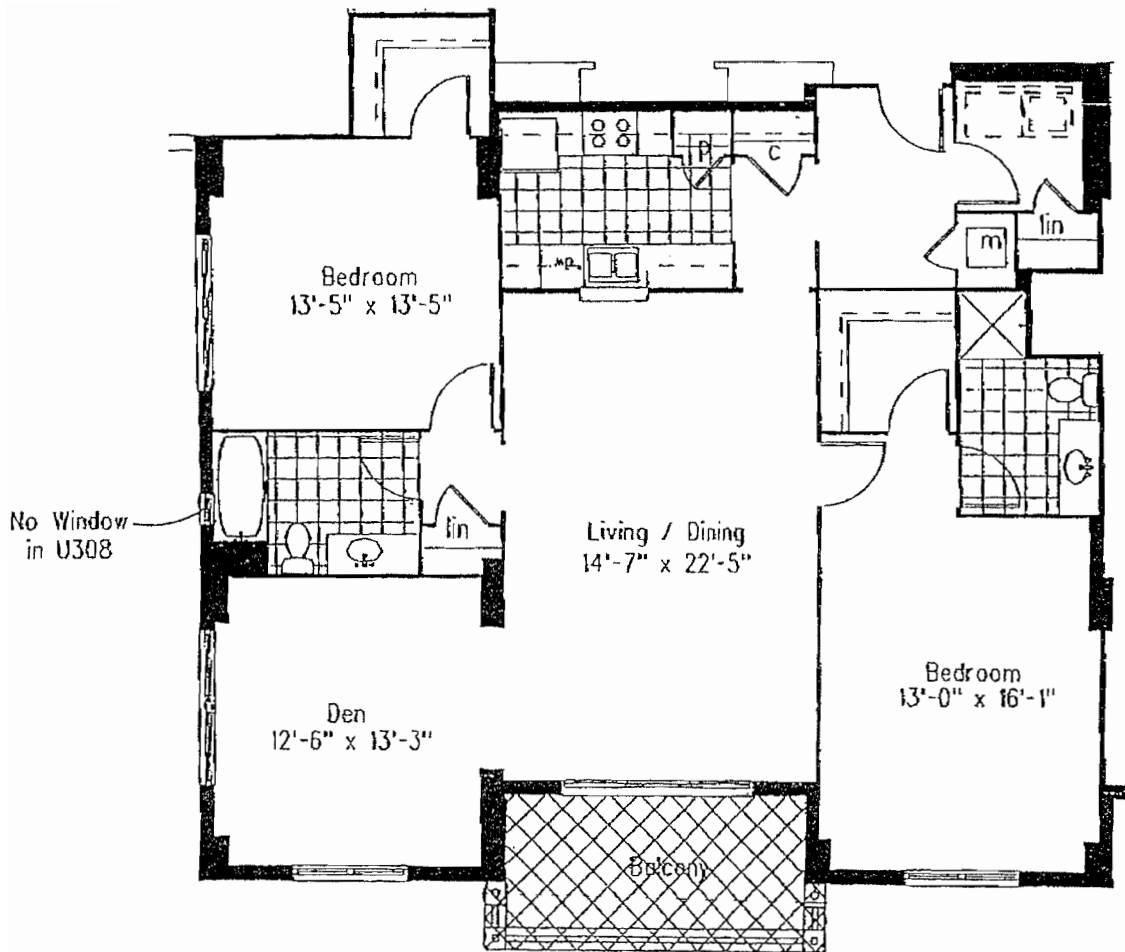
5th-16th Floors



Provided by:

CS
 & C
Candy Swick & Company
Licensed Real Estate Broker
941-954-9000

Oral representations cannot be relied upon as correctly stating representations of the developer. For correct representations, make reference to this advertisement and to the documents required by section 718.503, Florida Statutes, to be furnished by a developer to a buyer or lessee.



Unit F-1

Provided by:

C&S
Candy Swick & Company
Licensed Real Estate Broker

941-954-9000