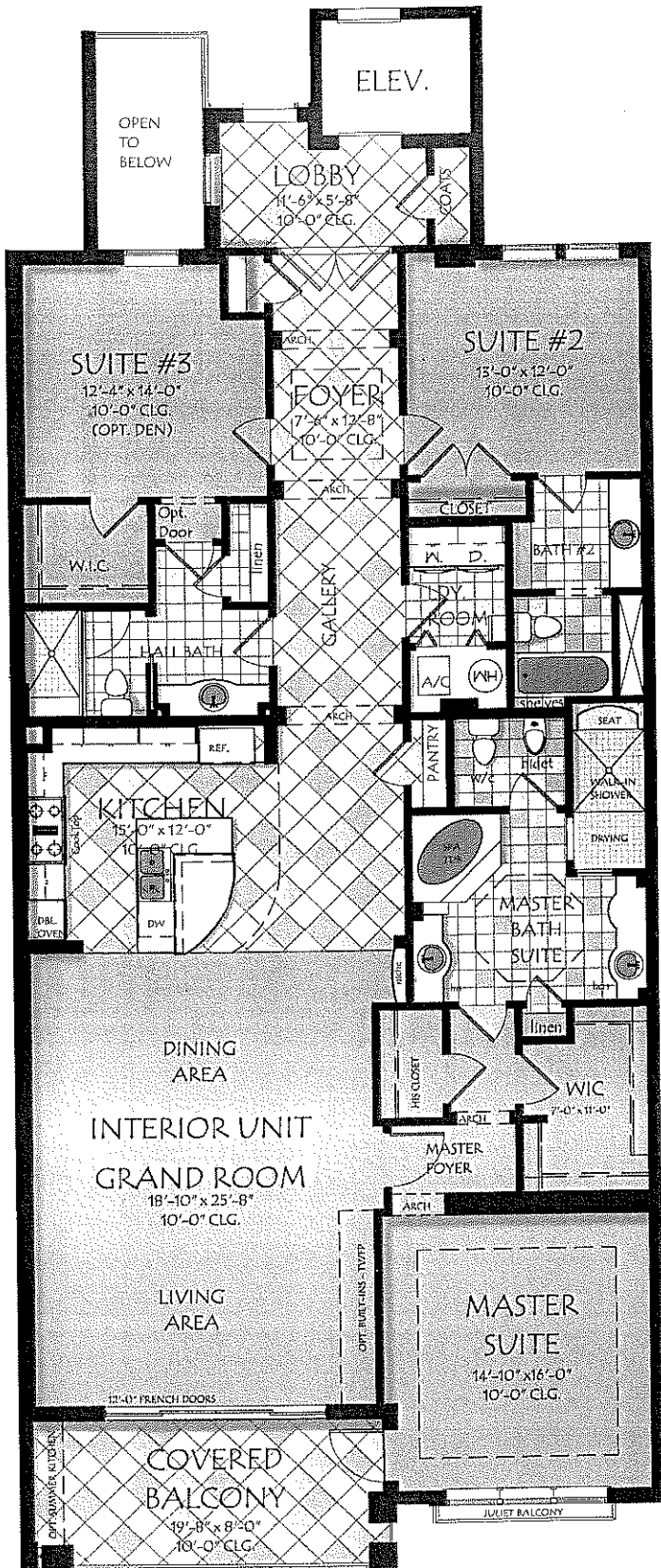




# Hudson Crossing

## FEATURES & AMENITIES



### BUILDING FEATURES

- British West Indies style architecture in the heart of Sarasota
- Electronic building access and gated garage access
- Elevator opens into Private Resident's Lobby
- Separate mail area
- Private 2-car garage with controlled access for each residence

### THE AMENITIES

- Private deep water boat slip for each residence
- Personal storage/cabana at pool level
- Tropically landscaped boutique community next to Selby Gardens
- Heated swimming pool with spa overlooking Hudson Bayou

### RESIDENCE FEATURES

- Grand entry foyer
- 18" x 18" tiled floors in lobby, foyer, gallery, kitchen, bathrooms, laundry, and balcony
- Ceiling heights up to 10 feet (Penthouse up to 11'4")
- Solid core raised panel entry door
- Stylish solid bronze entry door hardware
- Solid core raised panel 8 foot interior doors with solid brass hardware
- Recessed lighting in the kitchen, halls and bathrooms
- Individually controlled high efficiency air conditioning system with digital programmable thermostat
- Pre-wired with RG6 shielded cable to all television outlets
- CAT5 enhanced cable for telephone and data transmission
- Fire alarm and sprinkler systems throughout
- Large exterior terraces
- Spacious covered balcony facing Hudson Bayou
- Hurricane resistant laminated glass and window framing system
- Quality flooring, painted woodwork and walls

### CUSTOM GOURMET KITCHEN

- Imported Italian cabinetry Lubé
- Sub-Zero stainless steel side-by-side 42" refrigerator/freezer
- Natural granite counter tops
- Wolf 36" gas cooktop with 5 burners
- Wolf stainless steel 30" wall oven
- Wolf stainless steel 30" convection microwave
- Bosch stainless steel dishwasher
- Kitchen Aid disposal
- Eat-in counter with granite top
- Roomy pantry

### MASTER SUITE

- His and Hers walk-in closets and convenient linen storage
- Imported Italian cabinetry by Lubé
- Natural granite vanity tops
- Full height mirrors above vanity tops
- Jacuzzi Riva-5 soaking tub
- Ceramic tile shower flooring and wall surround
- Kohler lavatory faucets
- Kohler undercounter sinks
- Attractive towel bars and accessories
- Elongated Toto water closet and Kohler bidet

### GUEST BATHS

- Imported Italian cabinetry by Lubé
- Natural granite vanity tops
- Kohler lavatory faucets
- Kohler undercounter sinks
- Elongated Toto water closet

### LAUNDRY/UTILITY ROOM

- Whirlpool front loading washer & dryer
- Quick recovery hot water heater
- Optional laundry sink

### ADDITIONAL PENTHOUSE FEATURES

- Up to 11' 4" foot ceiling height
- Private roof-top starlight terrace
- Optional summer kitchen available
- Optional spa available

Provided by:



Candy Swick & Company  
Licensed Real Estate Broker

941-954-9000