

Provided by:

**Candy Swick & Company**  
Licensed Real Estate Broker  
941-954-9000



**Dolphin Tower**  
The Personal Choice for Discerning Individuals



### Your Apartment Home

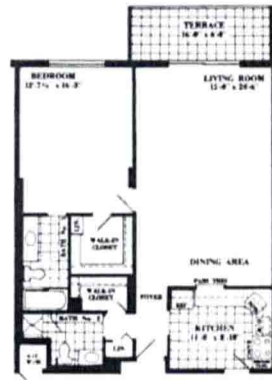
- Burglar-proof double lock system for security and peace of mind.
- Distinctive central entry foyer.
- Large private terrace.
- Cable TV hook-up for optimum reception.
- Luxurious wall-to-wall carpeting.
- Fully equipped kitchen with the latest in General Electric labor-saving appliances.
- Ceramic tile floors, tub and shower walls in all baths.
- Mica vanities with integral marble tops.
- Moisture reduction bath ventilating system.

Dolphin Tower is a sound investment and possesses an atmosphere for creative living that can only be described as . . . ENVIABLE!

- Totally sheltered in-building parking with security gates electronically controlled from inside your automobile.
- Electronic security designed lobby entry.
- In-building Emergency Generator to insure uninterrupted elevator service, corridor lighting and security.
- Twenty-four hour resident manager.
- Total Fireproof Construction.
- Adjacent to Palm Avenue's famed shops and restaurants.
- Overlooking Sarasota Bay and Yacht Basin.

### Your Amenity and Recreation Package

- Spacious private lobby elegantly furnished with hand painted murals and works of original art.
- The Dolphin Club featuring kitchen and wet bar facilities plus billiard, card and meeting room.
- Fourth floor heated pool overlooking Sarasota Bay with promenade for sun-bathing.
- Shuffleboard court and tree-shaded veranda.
- Men's and women's sauna baths.



*The Schooner (C/G)*  
1 Bedroom / 2 Baths



*The Windjammer (A/E)*  
2 Bedrooms - 2 Baths  
Representative Interior Home



*The Galleon (D)*  
2 Bedrooms / 2 Baths  
Representative Corner Home